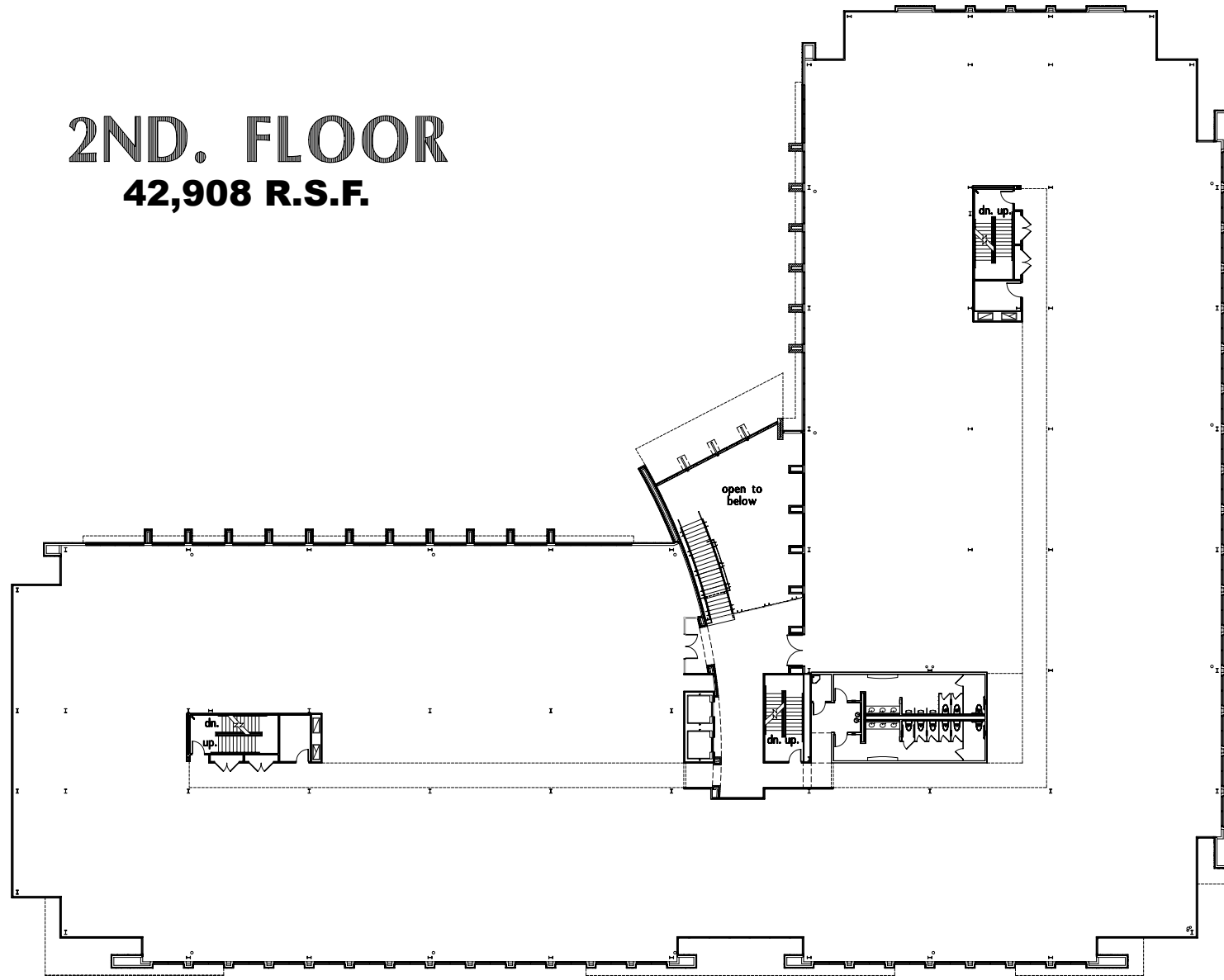


2ND. FLOOR

42,908 R.S.F.



2ND FLOOR PLAN

3/12"=1'-0"



2425 East Camelback Road
Suite 400
Phoenix, Arizona
85016
phone: 602.381.4848
fax: 602.381.4844
www.afacb.com

**McDOWELL MOUNTAIN
CORPORATE CENTER BUILDING - B**
90th Street & 16th Drive
Scottsdale, Arizona

106-NP-04



7-ZN-00, 8-ZN-04

78-DR-04

- SCHEMATIC
- DESIGN DEVELOPMENT
- CONSTRUCTION DOCUMENTS
- ISSUING PACKAGE
- MARKING SHEET
- APPROVAL

DATE REVISION 26 SEPT 05

DRAWN BY

CHECKED BY

PROJECT NO. 03332

CADD FILE

DRAWING NO.

A202
PLAN
2ND FLOOR

ISSUED AS NOTED

City Plan Check No. 5943-05